

GATEWAY TO BRISTOL

You can help save this land

The green fields and sweeping hills that welcome people to the village of Bristol are prime agricultural land that could someday be developed. The Vermont Land Trust has teamed up with local supporters to protect this scenic corridor north of Bristol on Route 116.

If this project is successful, 687 acres of land currently owned by the Farr and Fuller families will be protected. Both properties will remain affordable for future farmers.

As part of this project, The Nature Conservancy will protect Deer Leap Cliffs, forever providing breeding peregrine falcons a place to nest.

We have already raised 95% of the money required to make this project happen. The Vermont Housing and Conservation Board and the USDA Natural Resources Conservation Service together have allocated \$555,000. Also, the Bristol Selectboard approved the Conservation Commission's recommendation of \$10,000 to come from the Bristol Conservation Fund. Others have made generous donations.

We have \$35,000 left to raise by October 31, 2013.

www.vlt.org/bristol



Vermont Land Trust

CONSERVING LAND FOR THE FUTURE OF VERMONT

A New Farm for Bristol

If this project is successful, the Farris will sell their land to Trent and Abby Roleau, an experienced farming couple with a passion for agriculture and a clear vision for the land's future. The couple plan to raise cows, pigs, and chickens for meat that will be sold at an on-site farmstand. They also plan to make maple syrup, renovate the farmhouse, and build a barn. Robert Fuller plans to keep his land in the family.



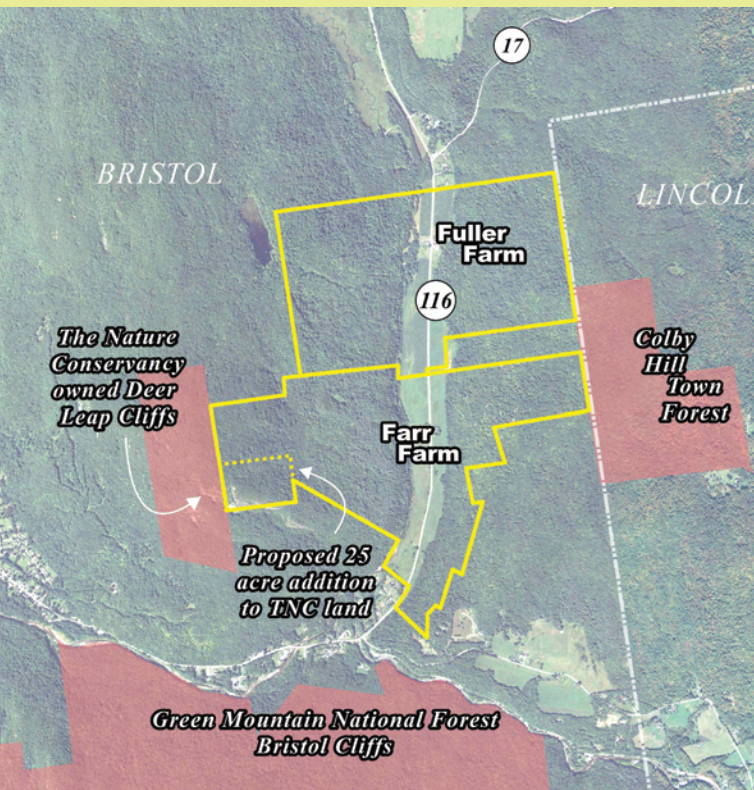
"We are thrilled to have the opportunity to purchase a farm through VLT's Farmland Access Program. The site is perfect for the diversified farm we plan to start."

- Trent Roleau



Protecting the Gateway to Bristol will:

- ✓ Permanently conserve scenic and productive farmland
- ✓ Revitalize the land with a new farm operation
- ✓ Ensure the long-term affordability of the farm
- ✓ Protect quality habitat for threatened Peregrine Falcons



Protect Wildlife Habitat & Baldwin Creek

The steep forested hills on both sides of Route 116 create valuable habitat that is home to bear, fox, and other species. The Nature Conservancy owns a portion of the cliffs and if this project is successful they will purchase another 25 acres of habitat. Since the reintroduction of peregrines 25 years ago, nesting pairs have fledged 52 chicks on these cliffs.

The two farms boast more than a mile of frontage on Baldwin Creek. Plans are underway to create a vegetated buffer on the Farr Farm that will keep waters shaded and cool for fish and prevent erosion during flood events.

How Can You Help?

Of the \$650,000 required to conserve the farm, we need to raise just \$35,000 more.

Tax deductible gifts or pledges can be made until October 31, 2013.

Please make a gift online at www.vlt.org or make checks payable to the Vermont Land Trust with "Gateway to Bristol" in the memo line.

Mail to:

Vermont Land Trust
8 Bailey Ave.
Montpelier, VT 05602

Please call us if you would like to make a multi-year pledge. Payments will be accepted through 1/31/14.

To learn more or to donate by phone, contact:

Al Karnatz, Regional Director
(802) 861-6402 or allen@vlt.org

Elise Annes, V.P. for Community Relations
(802) 262-1206 or elise@vlt.org



Vermont Land Trust

CONSERVING LAND FOR THE FUTURE OF VERMONT